

55

CHASE (UNION)

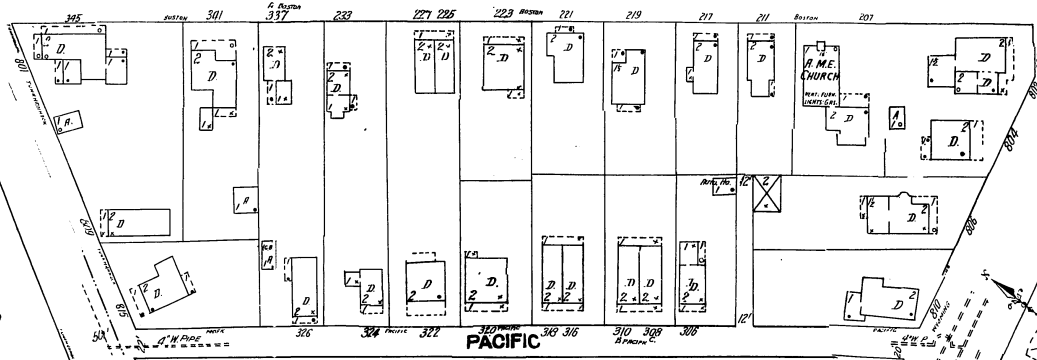
56

WEST PITTSBON

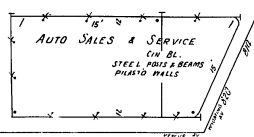
58

BOSTON AV.

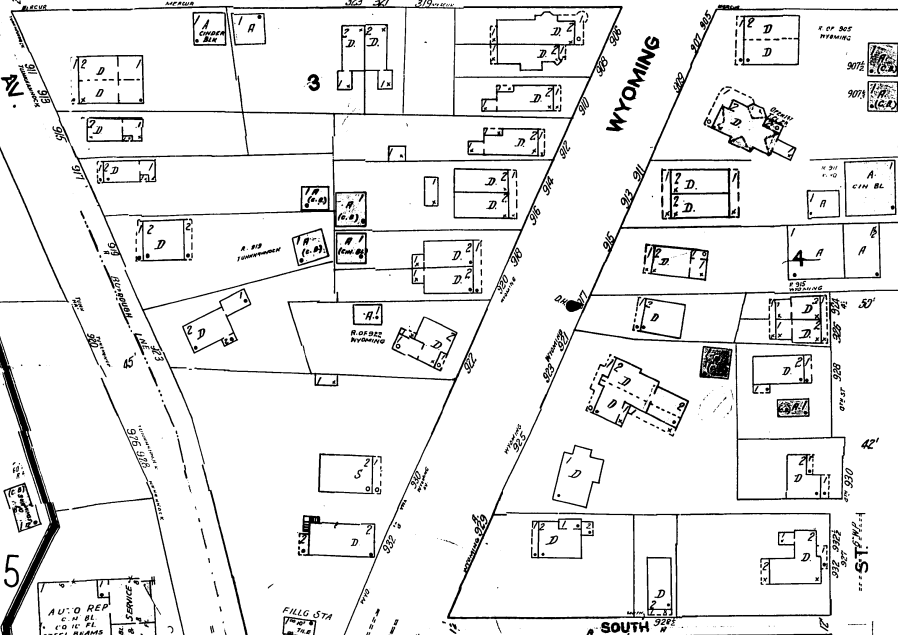
EXETER



PACIFIC



MERCUR AV.



WYOMING

WYOMING VALLEY LUMBER CO. INC.

WIGHT, SANDOFF & HOLLAND, WYOMING, NEWARK, DELAWARE.  
 12-10-1934. HENRY BROWN - SUPERVISOR, ELECTRIC - SCHEP  
 PETER C. LINDSAY - LIGHTS, ELECTRIC - MARY E. SPANGLER - A.S.  
 20. 20. 20. 20. 20. 20. 20. 20. 20. 20. 20. 20. 20. 20. 20.

KNIGHT SHEET OF  
 LEHIGH VALLEY COAL CO.

ERIE AV.

SOUTH 4TH



Scale of 1" = 100'