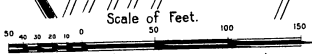
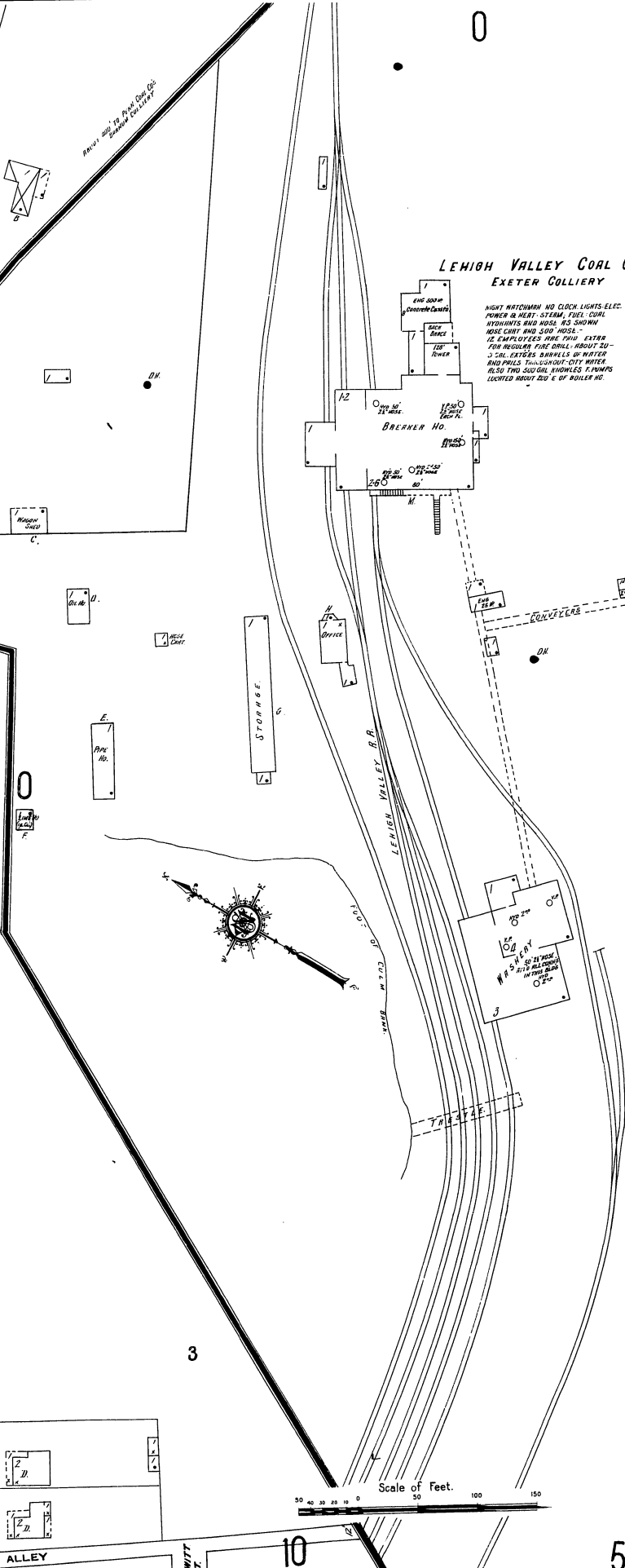
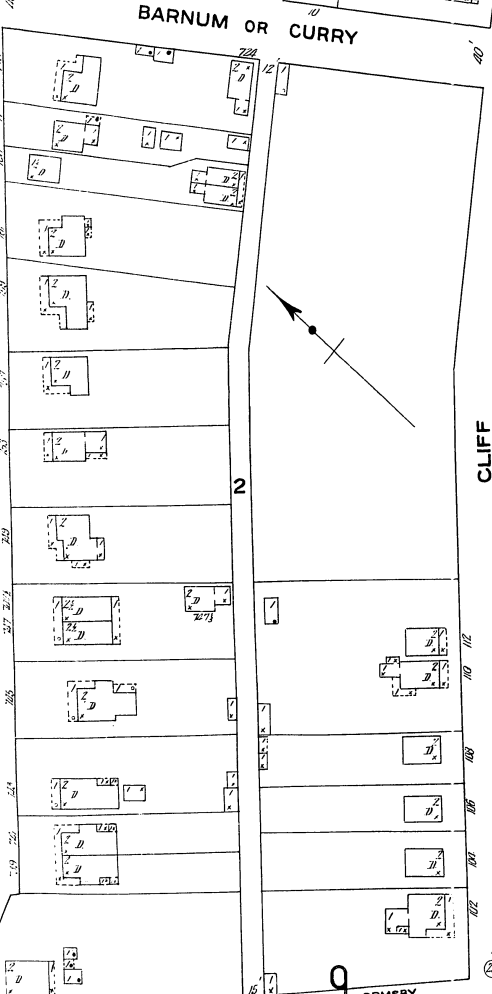
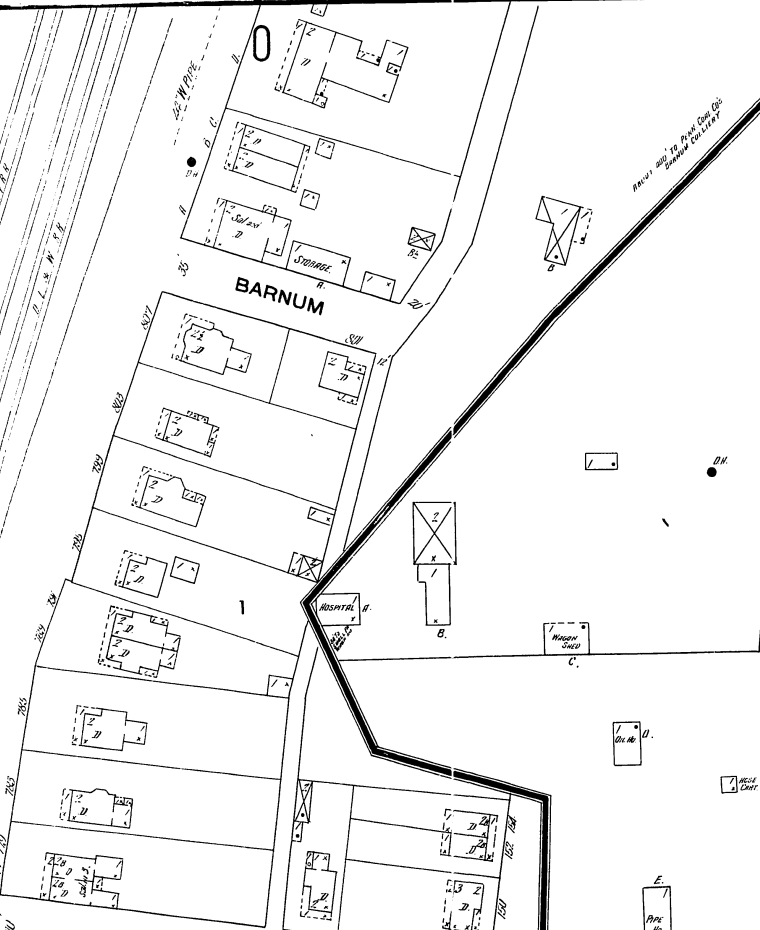
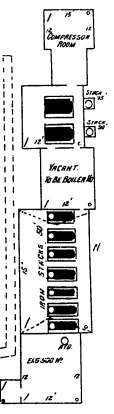
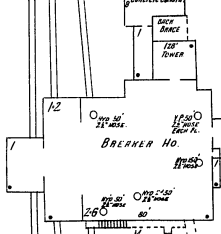


### LEHIGH VALLEY COAL CO. EXETER COLLIERY

NIGHT WATCHMEN NO CLOCK LIGHTS ELEC.  
 PUMPS IN HEAT. STEAM. FUEL. COAL  
 HYDRANTS AND HOSE. NO SHOWN  
 HOSE CHART AND SOO HOSE.  
 12 EMPLOYEES FIRE TOWNS EXTRA  
 FOR REGULAR FIRE DRILL: ABOUT 20-  
 30 CAR. EXCESSES BARRELS BY WATER  
 AND PAUL. THROUGHOUT-CITY WATER  
 ALSO TWO SOO-GAL. KNOCKLES. PUMPS  
 LOCATED ABOUT 200' E. OF BULLER NO.



Ovary  
 REPAIR SHOP  
 (max size)

CORNELIA

N. MAIN

2

3

10

BARNUM OR CURRY

BARNUM

CLIFF

ALLEY

ORMSBY

DWYTT ST.

LEHIGH VALLEY R.R.

RAILROAD

RAILROAD  
 100' W. OF CORNER CO.  
 BARNUM BUILDING

