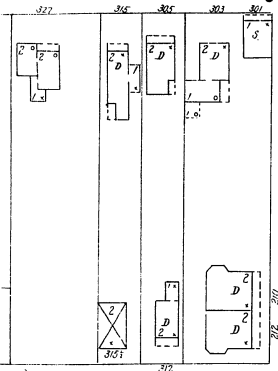
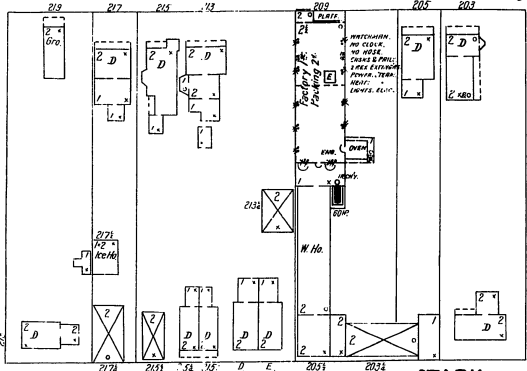


EXETER

5" W.P.

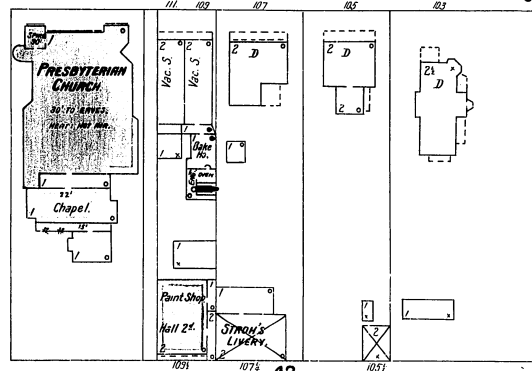


51



NATIONAL Biscuit Co.

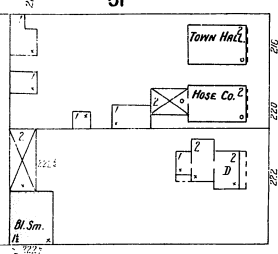
STARK



Presbyterian Church
Chapel

Strom's Livery

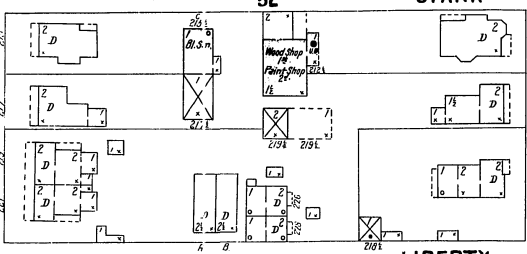
43



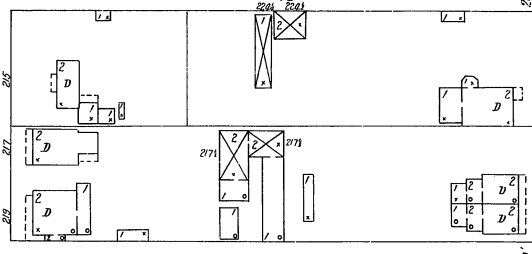
Town Hall

Hose Co. 2

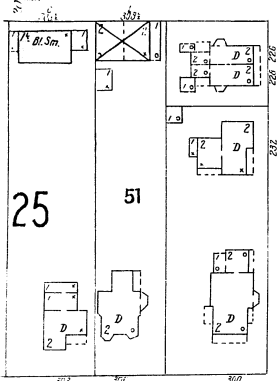
Bl. Sm.



LIBERTY



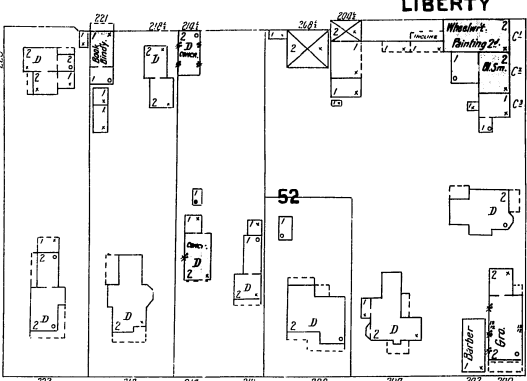
43



25

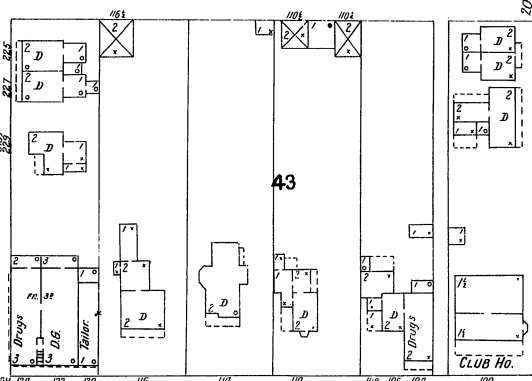
51

-SPRING



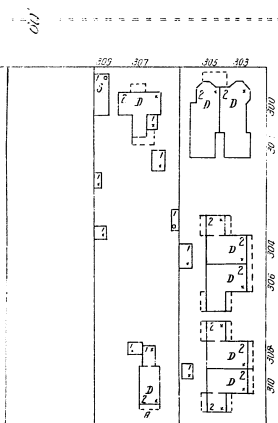
LUZERNE

5" W.P. AV.

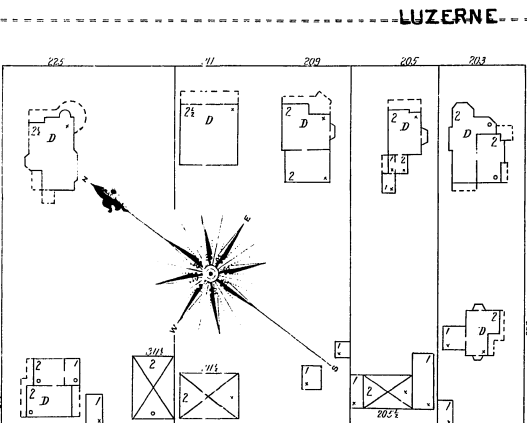


31

LINDEN



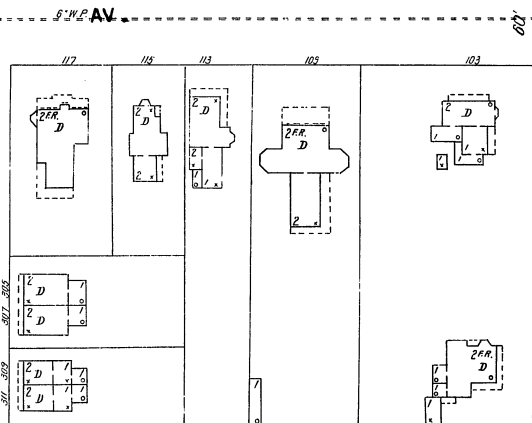
75



CARPENTER

BERRY

28



29

